



Prepared for:

Sautter Crane rental

2900 Black Lake Place Philadelphia, PA 19154

290 River Drive Garfield N.J.

on

8/26/2024

Please return the entire report.

Customer Sign Off

-If there are no deficiencies nothing needs to be done

-If there are any (HIGH, RED) deficiencies please follow the instructions below

The deficiencies marked HIGH in RED shall be corrected and this report must be dated, signed and email THIS ENTIRE REPORT to tony.rossi@tandemlift.com or jon.santimaw@tandemlift.com. After the signed document is received, a certification and label will be issued. The deficiencies denoted with (REC, MEDIUM, ORANGE) are recommended and are not required to be corrected to achieve certification. However those items should be corrected to improve equipment reliability and performance.

-The undersigned verifies that the deficiencies denoted with (DEF, HIGH, RED) have been corrected.

William Scutter

8/28/24

Signature

Date

Table of Contents

● High ● Med ● Low Section

Inspection - 290 River Drive Garfield N.J.

Lattice Boom Crane: 7771161 - S184

3

0

0

1.0

Tandem Lift LLC disclaims all warranties, both express and implied, relating to the information, reports, opinions and analysis disclosed to the Customer by Tandem Lift LLC. Tandem Lift LLC shall not be liable for any errors or omissions, or any losses, injury or damages arising from the use of such information, reports, opinions and analysis by the Customer.

Overview

Breakdown by Form

Form Type	High	Med	Low	# Forms
Inspection	3	0	0	1
Overall:	3	0	0	1

Breakdown by Location

Location	High	Med	Low	# Forms
290 River Drive Garfield N.J.	3	0	0	1
Overall:	3	0	0	1

Breakdown by Asset

Asset Type	High	Med	Low	# Assets
Lattice Boom Crane	3	0	0	1
Overall:	3	0	0	1

Tandem Lift LLC disclaims all warranties, both express and implied, relating to the information, reports, opinions and analysis disclosed to the Customer by Tandem Lift LLC. Tandem Lift LLC shall not be liable for any errors or omissions, or any losses, injury or damages arising from the use of such information, reports, opinions and analysis by the Customer.



Tandem Lift LLC
 321 Enlow Place
 Pennsville, NJ 08070
 833-TANDEM1

Inspection

Sautter Crane rental
 2900 Black Lake Place
 Philadelphia, PA 19154

FolderID: 082624S184
 FormID: 21405766



Lattice Boom Crane

Location: 290 River Drive Garfield N.J.
Serial #: 7771161
TagID: S184

Manufacturer: Manitowoc
Model: 777
Capacity: 200 Tons
Length/Lift: 140 Ft Of Boom, 3 Parts In Main And 2 Parts In Aux.
Hook Type: Load Block & Hook
Hook Type 2: Load Block & Hook

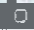
Priorities Found: ● 3 - High ● 108 - Good

Miles and Hours	
1. Miles	none Miles
2. Hours	469.5 Hours
Historical Records	
● 3. Monthly Inspection	(SAT) Satisfactory
● 4. Documentation of Annual / Comprehensive Inspection	(SAT) Satisfactory
● 5. Equipment Modification(s) or additions	(SAT) Satisfactory
● 6. Record of Maintenance	(SAT) Satisfactory
● 7. Record of Load Test	(NA) Not Applicable
General	
● 8. Sheet Metal	(SAT) Satisfactory
● 9. Covers and Guards	(SAT) Satisfactory
● 10. External Lights	(NA) Not Applicable
● 11. Housekeeping	(SAT) Satisfactory
● 12. Safety and Warning Labels	(SAT) Satisfactory
● 13. Hand Signal Chart	(SAT) Satisfactory
Crawler Assembly	
● 49. Car body/ Side frames	(SAT) Satisfactory
● 50. Chain, idlers and Sprocket	(SAT) Satisfactory
● 51. Track Pads, and Pins	(SAT) Satisfactory
● 52. Travel Steering, Brakes, and Locking Devices	(SAT) Satisfactory
● 53. Steering Clutches	(SAT) Satisfactory
Operator's Station	
● 54. Steps / Ladders / Handrails	(SAT) Satisfactory
● 55. Anti-Skid Stepping Surfaces	(SAT) Satisfactory
● 56. Windows	(SAT) Satisfactory

Tandem Lift LLC disclaims all warranties, both express and implied, relating to the information, reports, opinions and analysis disclosed to the Customer by Tandem Lift LLC. Tandem Lift LLC shall not be liable for any errors or omissions, or any losses, injury or damages arising from the use of such information, reports, opinions and analysis by the Customer.

● 57. Windshield Wipers	(SAT) Satisfactory
● 58. Cab Door Restraint	(SAT) Satisfactory
● 59. Fire Extinguisher	(SAT) Satisfactory
● 60. Mirrors	(SAT) Satisfactory
● 61. Seat	(SAT) Satisfactory
● 62. Seatbelts	(NA) Not Applicable
● 63. Operator's Manual	(SAT) Satisfactory
● 64. Decals	(SAT) Satisfactory
● 65. Electrocution Warning Sign(inside the cab)	(SAT) Satisfactory
● 66. Hand Signal Charts	(SAT) Satisfactory
● 67. Swing Brake	(SAT) Satisfactory
● 68. Positive Swing lock	(SAT) Satisfactory
● 69. Control Function	(SAT) Satisfactory
● 70. Air Pressure	(NA) Not Applicable
● 71. Performance Indicators (Pressure)	(SAT) Satisfactory
● 72. Posted Warnings	(SAT) Satisfactory
● 73. Brake and Clutch	(SAT) Satisfactory
● 74. Accelerator / Throttle	(SAT) Satisfactory
● 75. Foot Brakes, Latches, and Linkage	(SAT) Satisfactory
Load Chart	
● 76. Ground Level, Remotely Controlled	(NA) Not Applicable
● 77. Per Configuration	(SAT) Satisfactory
● 78. Visible from Fixed Operator's Station	(SAT) Satisfactory
● 79. Durable / Legible/ Secured	(SAT) Satisfactory
Safety Devices / Operational Aids	
● 80. Horn	(DEF) Deficiency
● 81. Boom Angle Indicator	(SAT) Satisfactory
● 82. Main Drum rotation indicator	(SAT) Satisfactory
● 83. Auxiliary Drum rotation indicator	(SAT) Satisfactory
● 84. Radius Indicator	(SAT) Satisfactory
● 85. Crane Level Indicator	(SAT) Satisfactory
● 86. Two-Block System	(DEF) Deficiency
● 87. Boom Hoist Limiting Device	(SAT) Satisfactory
● 88. Boom Hoist Ratchet and Pawl	(SAT) Satisfactory
● 89. Outrigger / Stabilizer Position Sensor	(NA) Not Applicable
● 90. Luffing Jib Angle Indicator	(NA) Not Applicable
Upper Power Plant	
● 91. Performance	(SAT) Satisfactory
● 92. Exhaust System/Guards & Insulators	(SAT) Satisfactory
● 93. Hoses	(SAT) Satisfactory
● 94. Reciprocating and rotating parts	(SAT) Satisfactory
Rotating Upper Structure	
● 95. Turntable / Bearing	(SAT) Satisfactory
● 96. Turntable / Rollers	(NA) Not Applicable
● 97. Ring and Pinion Gear	(SAT) Satisfactory
● 98. Ring and Pinion Gear.	(SAT) Satisfactory
● 99. Hydraulic and Pneumatic Pumps	(SAT) Satisfactory


Tandem Lift LLC disclaims all warranties, both express and implied, relating to the information, reports, opinions and analysis disclosed to the Customer by Tandem Lift LLC. Tandem Lift LLC shall not be liable for any errors or omissions, or any losses, injury or damages arising from the use of such information, reports, opinions and analysis by the Customer.

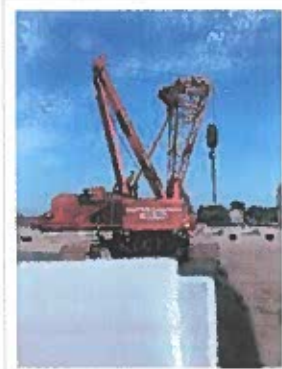
● 100. Hydraulic Tubes, Fitting, and Hoses	(SAT) Satisfactory	
● 101. Hydraulic Pressure	(SAT) Satisfactory	
● 102. Electrical Wiring	(SAT) Satisfactory	
● 103. Main Hoist - Brakes and Clutch System	(SAT) Satisfactory	
● 104. Main Hoist - Wire Rope Reeving	(SAT) Satisfactory	
● 105. Main Hoist - Meets 2 rope wrap minimum	(SAT) Satisfactory	
● 106. Auxiliary Hoist - Brakes and Clutch System	(SAT) Satisfactory	
● 107. Auxiliary Hoist - Wire Rope Reeving	(SAT) Satisfactory	
● 108. Auxiliary Hoist - Meets 2 rope wrap minimum	(SAT) Satisfactory	
● 109. Boom Hoist - Brakes and Clutch System ■ Hydraulic	(NA) Not Applicable	P109
● 110. Boom Hoist - Wire Rope Reeving	(NA) Not Applicable	
● 111. Boom Hoist - Meets 2 rope wrap minimum	(NA) Not Applicable	
● 112. Swing System / Assembly	(SAT) Satisfactory	
● 113. Hydraulic and Pneumatic Pumps and Motors	(SAT) Satisfactory	
● 114. Drums and Flanges	(SAT) Satisfactory	
● 115. Clutch and Brake Protection	(SAT) Satisfactory	
● 116. Torque Converter	(NA) Not Applicable	
● 117. Slip resistant walking and stepping surfaces	(SAT) Satisfactory	
● 118. Steps, Grab rails, and platforms	(SAT) Satisfactory	
● 119. Access to Cab and Roof	(SAT) Satisfactory	
● 120. Air System	(NA) Not Applicable	
● 121. Counterweight Mounting	(SAT) Satisfactory	
● 122. Counterweight Warnings Signs	(SAT) Satisfactory	
● 123. Electrocutation Warnings Signs	(SAT) Satisfactory	
Boom Support System 		
● 124. Gantry and Mast	(SAT) Satisfactory	
● 125. Boom Stops	(SAT) Satisfactory	
● 126. Inner Bail ■ Hydraulic	(NA) Not Applicable	
● 127. Outer Bail and Equalizer ■ Hydraulic	(NA) Not Applicable	P127
● 128. Sheaves ■ Hydraulic	(NA) Not Applicable	
● 129. Boom Hoist Wire Rope Reeving	(NA) Not Applicable	
Boom 		
● 130. Boom Section Identification	(SAT) Satisfactory	P130
● 131. Boom Section Sequence	(SAT) Satisfactory	
● 132. Boom Section Alignment	(SAT) Satisfactory	
● 133. Warning Labels and Decals	(SAT) Satisfactory	
● 134. Spreader Bar	(NA) Not Applicable	
● 135. Sheaves	(SAT) Satisfactory	
● 136. Boom Head Section	(SAT) Satisfactory	P136
● 137. Auxiliary Boom Head	(SAT) Satisfactory	P137
● 138. Lattice Members	(SAT) Satisfactory	
● 139. Cord Members	(SAT) Satisfactory	
● 140. End Connections/Pins	(SAT) Satisfactory	

Tandem Lift LLC disclaims all warranties, both express and implied, relating to the information, reports, opinions and analysis disclosed to the Customer by Tandem Lift LLC. Tandem Lift LLC shall not be liable for any errors or omissions, or any losses, injury or damages arising from the use of such information, reports, opinions and analysis by the Customer.

● 141. Boom Foot Pins and Keepers	(SAT) Satisfactory	P141
● 142. Hoist Line Dead End	(SAT) Satisfactory	
● 143. Wire Rope Retainers	(SAT) Satisfactory	
Wire Rope Main Hoist drum		
● 161. Rope Damage	(SAT) Satisfactory	
162. Diameter & Wear		
Size:	Diameter & Wear	
1 inch or 25.4 mm	1.04 inch or 26.5 mm	
● 163. Broken Wires	(SAT) Satisfactory	
● 164. Lubrication	(SAT) Satisfactory	
● 165. End Connectors	(SAT) Satisfactory	
● 166. End Connectors, Pins, Keepers	(SAT) Satisfactory	
Wire rope Auxiliary Drum 1		
● 167. Rope Damage	(SAT) Satisfactory	
168. Diameter & Wear		
Size	Diameter / wear	
1 inch or 25.4 mm	1.04 inch or 26.5 mm	
● 169. Broken Wires	(SAT) Satisfactory	
● 170. Lubrication	(SAT) Satisfactory	
● 171. End Connectors	(SAT) Satisfactory	
Wire rope Auxiliary Drum 2		
172. Diameter & Wear		
Size	Diameter & Wear	
none	none	
● 173. Broken Wires	(NA) Not Applicable	
● 174. Lubrication	(NA) Not Applicable	
● 175. End Connectors	(NA) Not Applicable	
Wire rope Auxiliary drum 3		
● 176. Rope Damage	(NA) Not Applicable	
● 177. Measured Wear.	(NA) Not Applicable	
178. Diameter & Wear		
Size:	Diameter & Wear	
none	none	
● 179. Broken Wires	(NA) Not Applicable	
● 180. Lubrication	(NA) Not Applicable	
● 181. End Connectors	(NA) Not Applicable	
Wire rope Boom Hoist Drum		
182. Diameter & Wear		
Size:	Diameter & Wear:	
none	none	
● 183. Broken Wires	(NA) Not Applicable	
● 184. Lubrication	(NA) Not Applicable	
● 185. End Connectors	(NA) Not Applicable	
Pendants & End connections		
● 186. Rope Damage.	(SAT) Satisfactory	

Tandem Lift LLC disclaims all warranties, both express and implied, relating to the information, reports, opinions and analysis disclosed to the Customer by Tandem Lift LLC. Tandem Lift LLC shall not be liable for any errors or omissions, or any losses, injury or damages arising from the use of such information, reports, opinions and analysis by the Customer.

187. Diameter & Wear		
Size:	Diameter & Wear	
1 1/4 inch or 32 mm	1 1/4 inch or 32 mm	
Load Block & Hook		
● 188. Capacity Marking	(SAT) Satisfactory	P188
● 189. Weight Marking	(SAT) Satisfactory	P189
● 190. Sheave(s)	(SAT) Satisfactory	P190
● 191. Safety Latch(es)	(SAT) Satisfactory	
● 192. 0° Hook Bend or Twist	(SAT) Satisfactory	
● 193. 5% Hook Opening or 1/4" Max	(SAT) Satisfactory	
● 194. 10% Hook Wear Max	(SAT) Satisfactory	
● 195. Swivel	(SAT) Satisfactory	
● 196. Bearing	(SAT) Satisfactory	
● 197. Wedge Socket / End Fitting	(SAT) Satisfactory	
● 198. Reeving	(SAT) Satisfactory	
No-Load Operational Test		
● 207. No-Load Operational Test	(SAT) Satisfactory	
Verification and Completion		
208. Inspector Name and Signature	Steven Edling	
		
209. Date of Inspection	08/26/2024	
210. Customer Name and Signature		
● 211. Certificate Issued	(N) No	



P109.1



P127.2



P130.3



P136.4

Tandem Lift LLC disclaims all warranties, both express and implied, relating to the information, reports, opinions and analysis disclosed to the Customer by Tandem Lift LLC. Tandem Lift LLC shall not be liable for any errors or omissions, or any losses, injury or damages arising from the use of such information, reports, opinions and analysis by the Customer.



P136.5



P137.6



P141.7



P188.8



P189.9



P190.10